

BRING FLEXIBILITY AND RESILIENCY TO YOUR WAN WITH T-MOBILE BUSINESS INTERNET.



In stores, restaurants, offices, and other fixed and temporary locations, wired connectivity isn't always agile enough. Organizations that can't function without connectivity for laptops, printers, IoT devices, and cloud applications can use a fixed wireless-driven approach to maximize WAN reliability and flexibility. Wireless WAN solutions featuring T-Mobile Business Internet are an innovative new option to support all the networking needs of a digitally transformed branch location.

90% of organizations are investigating business cases and defining use cases or service portfolios based on 5G.

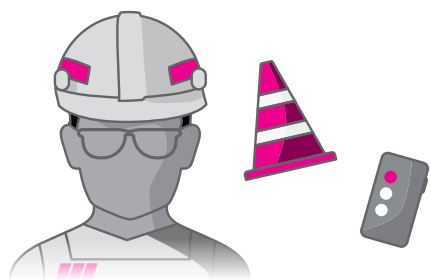
— Infosys

The requirements of today's connection-reliant branches

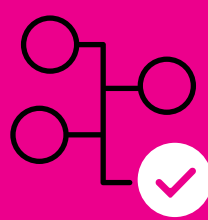


Integrated security

“Our financial planning offices require flexible WAN capabilities, as well as the ability to protect sensitive client information with a small IT team. We require an all-in-one solution that provides the security features we need to comply with wide-ranging regulations.”



“At each new construction site, we must be ready to set up a base of operations at a moment's notice. Pop-up wireless solutions allow us to focus on coordinating the project and managing our work teams instead of worrying about where the nearest cable plug-in is located.”

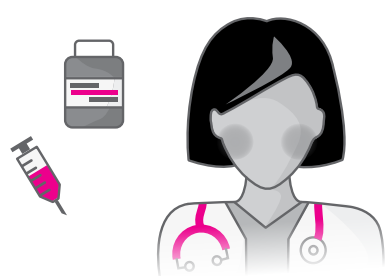


Hybrid WAN Flexibility



Management from anywhere

“With restaurants in every state, it's impossible to send an IT specialist to address every issue. To troubleshoot, push out security updates, or change a configuration, we use a cloud-based network management system. We monitor locations nationwide from easy-to-read dashboards. It's the only way to manage such a large network.”



“Our clinics must have excellent Wi-Fi coverage for doctors and nurses to use technologies and access patient data anywhere in the building. However, we also need it for administrative tasks and guest Wi-Fi in the waiting area. The ability to segment traffic onto two different SSIDs through the same router is crucial.”

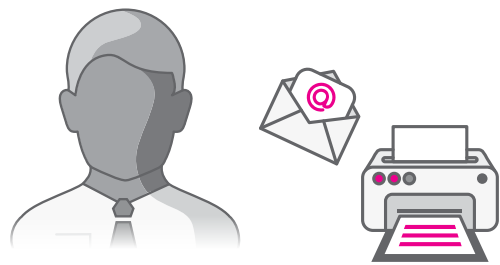


High-performance Wi-Fi



Wireless LTE and 5G performance

“We need an agile network to respond to customer needs. Internet downtime prevents us from using technologies that help us keep shoppers happy. Using LTE and 5G solutions for primary and secondary WAN connectivity keeps store operations running smoothly.”



“We need reliable access to applications and data that drive our business—including video conference calls—that devour tons of bandwidth. We need intelligent traffic steering along with the flexibility to use both wireless and wired broadband for our WAN. We get it all through our wireless-optimized SD-WAN routers.”



Wireless-optimized SD-WAN



For more information about fixed wireless solutions from T-Mobile, visit [T-Mobile.com/business-internet](https://www.t-mobile.com/business-internet) or contact your T-Mobile representative.